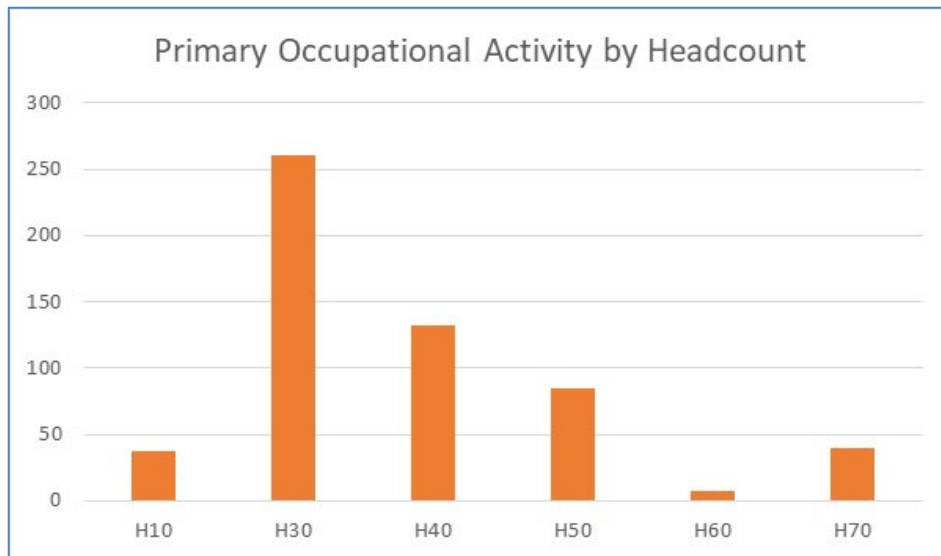


**LOYOLA UNIVERSITY NEW ORLEANS**  
**Staff Distribution by Occupational Activity**  
**2022**

Primary Occupational Activity	1 Full-time Regular	2 Part-time Regular	3 Full-time Temporary	4 Part-time Temporary	5 Other	Total
H10 - Executive/Administrative	35	-	-	-	-	35
H30 - Professional/Non Faculty	222	20	2	1	-	245
H40 - Clerical and Secretarial	37	26	-	1	-	64
H50 - Technical and Paraprofessional	39	51	2	11	3	106
H60 - Skilled Crafts	8	-	-	-	-	8
H70 - Service/Maintenance	34	-	-	-	-	34
H80 - Graduate Assistants (non-teaching)	-	-	-	-	50	50
H90 - Student Workers	-	-	-	-	741	741
	375	97	4	13	794	1,283



Payroll #6, as of 10.8.2022

Excludes H20 (Faculty)

Note: Positions reclassified within the new Colleague system implemented 2022 Fall.