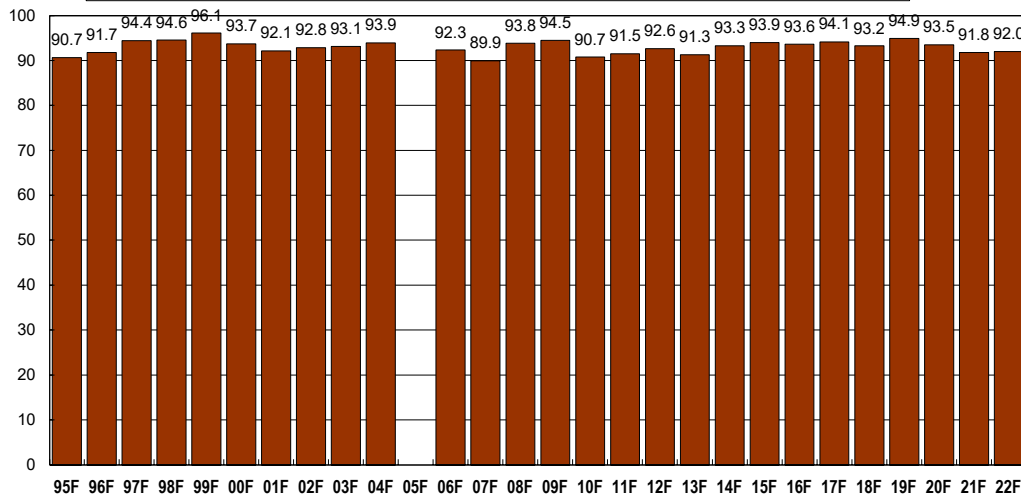


Fall Full-Time Undergraduate Freshman Cohort Returning in Spring - Colleges of CAS, BU, MA, Online

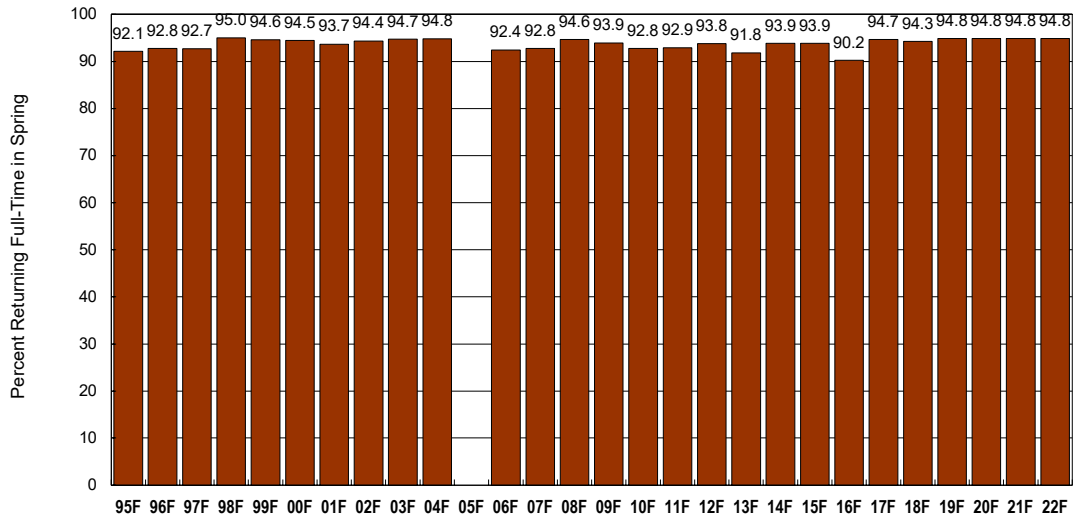


	Entering FT Freshmen	Returning FT Spring	Returning PT Spring	% Returning Lost	% Returning FT Spring	% Returning FT/PT Spring	# Returning Online Included in Total	% Returning All Online Included in Total	% Returning FT Online Included in Total
2022 Fall	797	731	2	64	91.7	92.0	5 of 9	55.6%	44%
2021 Fall	922	841	5	76	91.2	91.8	2 of 3	66.7%	67%
2020 Fall	765	712	3	50	93.1	93.5	2 of 3	66.7%	67%
2019 Fall	822	775	5	42	94.3	94.9	3 of 3	100.0%	100%
2018 Fall ¹	768	713	3	52	92.8	93.2	4 of 8	50.0%	50%
2017 Fall	801	753	1	47	94.0	94.1			
2016 Fall	612	570	3	45	93.1	93.6			
2015 Fall	661	621	0	40	93.9	93.9			
2014 Fall	609	563	5	41	92.4	93.3			
2013 Fall	620	564	2	54	91.0	91.3			
2012 Fall	866	799	3	64	92.3	92.6			
2011 Fall	857	781	3	73	91.1	91.5			
2010 Fall	767	696	0	71	90.7	90.7			
2009 Fall	796	751	1	44	94.3	94.5			
2008 Fall	694	648	3	43	93.4	93.8			
2007 Fall	495	444	1	50	89.7	89.9			
2006 Fall	520	479	1	40	92.1	92.3			
2005 Fall				Katrina					
2004 Fall	808	758	1	49	93.8	93.9			
2003 Fall	859	800	0	59	93.1	93.1			
2002 Fall	866	800	4	62	92.4	92.8			
2001 Fall	864	795	1	68	92.0	92.1			
2000 Fall	839	779	7	53	92.8	93.7			
1999 Fall	797	764	2	31	95.9	96.1			
1998 Fall	661	620	5	36	93.8	94.6			
1997 Fall	679	638	3	56	94.0	94.4			
1996 Fall	509	465	2	42	91.4	91.7			
1995 Fall	685	620	1	64	90.5	90.7			

Data not available due to H. Katrina.

¹ This is the first year that the cohort includes online students/programs

**Fall Full-Time Degree-Seeking Undergraduates -
Colleges of CAS, BU, MA**



	Full-time Head Count	Returning FT Spring	Returning PT Spring	Returning Graduated	Returning Lost	Returning FT Spring	Returning FT/PT Spring	Returning Online Included in Total	Returning Online Included in Total
2022 Fall	3,166	2,658	154	96	354	86.6	94.8	123 of 179	78.3
2021 Fall	3,369	2,734	199	82	354	83.2	94.8	168 of 232	80.5
2020 Fall	3,154	2,631	193	93	232	86.0	94.8	186 of 231	80.5
2019 Fall	2,795	2,547	62	44	142	92.6	94.8	65 of 79	83.3
2018 Fall ¹	2,635	2,384	62	41	148	91.9	94.3	34 of 48	70.8
2017 Fall	2,414	2,191	40	58	125	93.0	94.7		
2016 Fall ²	2,308	1,969	41	80	218	88.4	90.2		
2015 Fall	2,508	2,247	59	51	151	91.5	93.9		
2014 Fall	2,618	2,335	63	63	156	91.4	93.9		
2013 Fall	2,764	2,431	50	62	221	90.0	91.8		
2012 Fall	2,985	2,674	49	82	180	92.1	93.8		
2011 Fall	2,953	2,625	67	56	205	90.6	92.9		
2010 Fall	2,650	2,371	36	56	187	91.4	92.8		
2009 Fall	2,469	2,201	45	78	145	92.1	93.9		
2008 Fall	2,301	2,075	44	62	120	92.7	94.6		
2007 Fall	2,326	2,059	39	64	164	91.0	92.8		
2006 Fall	2,626	2,304	45	85	192	90.7	92.4		
2005 Fall	Katrina								
2004 Fall	3,183	2,901	51	68	163	93.1	94.8		
2003 Fall	3,268	2,959	61	80	168	92.8	94.7		
2002 Fall	3,238	2,920	53	87	178	92.7	94.4		
2001 Fall	3,179	2,835	60	88	196	91.7	93.7		
2000 Fall	3,003	2,708	48	86	161	92.8	94.5		
1999 Fall	2,747	2,443	65	96	143	92.2	94.6		
1998 Fall	2,604	2,313	67	99	125.0	92.3	95.0		
1997 Fall	2,627	2,286	38	119	184.0	91.1	92.7		
1996 Fall	2,525	2,192	65	92	176.0	90.1	92.8		
1995 Fall	2,701	2,363	51	81	206.0	90.2	92.1		

Data not available due to H. Katrina.

*Includes degree-seeking students. Excludes visiting/(EX)exchange students, (ES)early scholars,(TRA) transient, and (ND)non degree.

¹ This is the first year that enrollment includes online students/programs

² Recalculated 4/2019

Graduated includes GD and GH