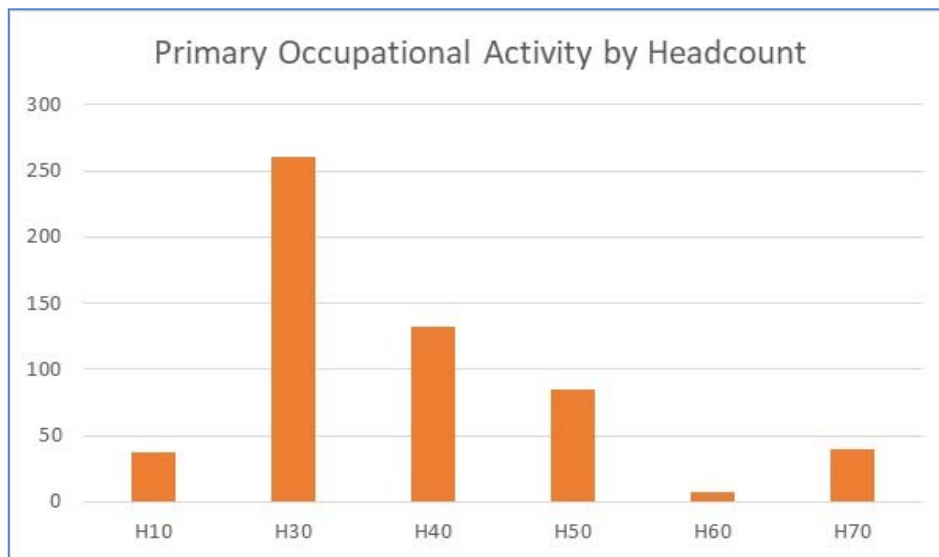


LOYOLA UNIVERSITY NEW ORLEANS
Staff Distribution by Occupational Activity
2019

Primary Occupational Activity	1 Full-time Regular	2 Part-time Regular	3 Full-time Temporary	4 Part-time Temporary	5 Other	Total
H10 - Executive/Administrative	37	0	0	0	0	37
H30 - Professional/Non Faculty	198	1	11	23	9	242
H40 - Clerical and Secretarial	81	0	43	22	11	157
H50 - Technical and Paraprofessional	11	0	41	36	24	112
H60 - Skilled Crafts	6	0	1	0	0	7
H70 - Service/Maintenance	40	0	0	0	1	41
H80 - Graduate Assistants	0	0	0	163	0	163
H90 - Student Workers	0	0	1	2988	0	2989
	373	1	97	3232	45	3748



as of 11.1.19

Excludes H20 (Faculty)