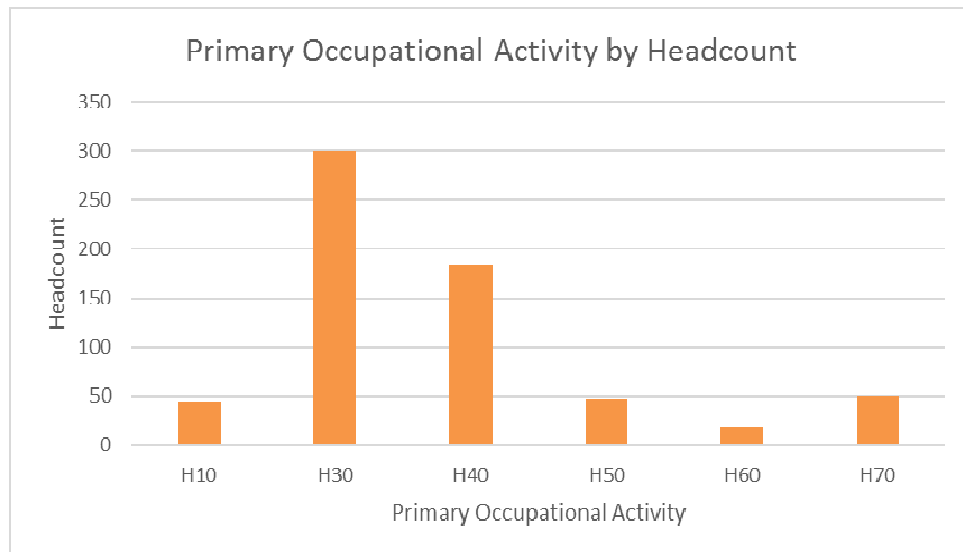


**LOYOLA UNIVERSITY NEW ORLEANS**  
**Staff Distribution by Occupational Activity**  
**2017**

Primary Occupational Activity	1 Full-time Regular	2 Part-time Regular	3 Full-time Temporary	4 Part-time Temporary	5 Other	Total
H10 - Executive/Administrative	42	0	0	0	0	42
H30 - Professional/Non Faculty	192	2	42	31	14	281
H40 - Clerical and Secretarial	109	0	26	25	9	169
H50 - Technical and Paraprofessional	10	0	19	18	12	59
H60 - Skilled Crafts	6	0	2	2	1	11
H70 - Service/Maintenance	42	0	1	0	1	44
H80 - Graduate Assistants	0	0	0	148	0	148
H90 - Student Workers	0	0	0	2805	0	2805
	401	2	90	3029	37	3559



as of 10.5.17