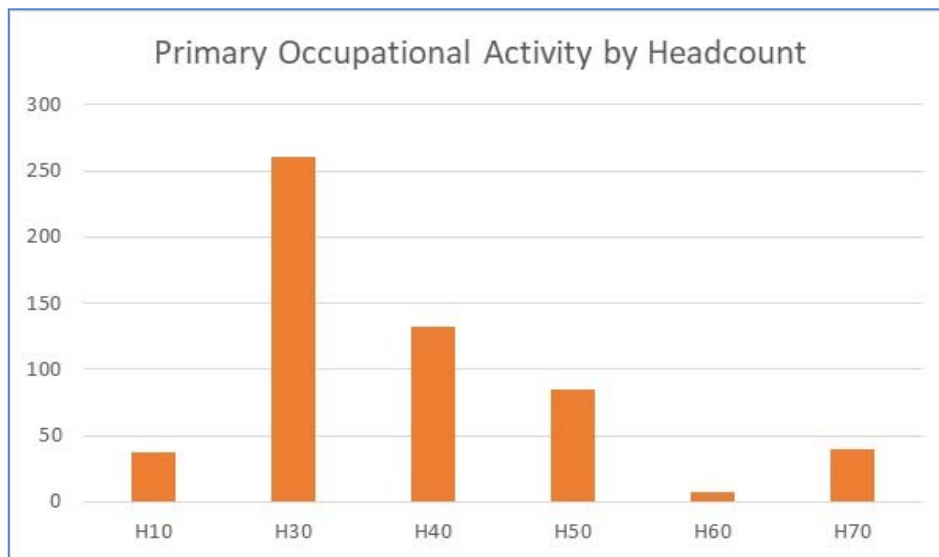


LOYOLA UNIVERSITY NEW ORLEANS
Staff Distribution by Occupational Activity
2020

Primary Occupational Activity	1 Full-time Regular	2 Part-time Regular	3 Full-time Temporary	4 Part-time Temporary	5 Other	Total
H10 - Executive/Administrative	35	-	-	-	-	35
H30 - Professional/Non Faculty	212	1	15	19	9	256
H40 - Clerical and Secretarial	82	-	38	37	9	166
H50 - Technical and Paraprofessional	10	-	32	39	25	106
H60 - Skilled Crafts	6	-	1	-	-	7
H70 - Service/Maintenance	39	-	-	-	1	40
H80 - Graduate Assistants	-	-	-	178	-	178
H90 - Student Workers	-	-	2	3,191	-	3,193
	384	1	88	3,464	44	3,981



Payroll #5, as of 10.2.20

Excludes H20 (Faculty)