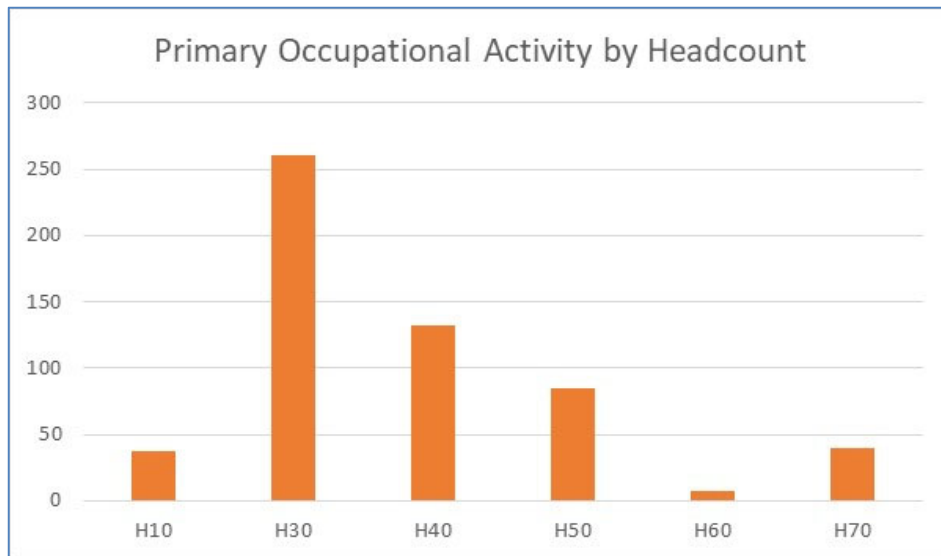


LOYOLA UNIVERSITY NEW ORLEANS
Staff Distribution by Occupational Activity
2021

Primary Occupational Activity	1 Full-time Regular	2 Part-time Regular	3 Full-time Temporary	4 Part-time Temporary	5 Other	Total
H10 - Executive/Administrative	42	-	-	-	.	42
H30 - Professional/Non Faculty	221	-	-	-	-	221
H40 - Clerical and Secretarial	65	2	58	3	7	135
H50 - Technical and Paraprofessional	7	-	24	-	-	31
H60 - Skilled Crafts	5	-	-	-	-	5
H70 - Service/Maintenance	50	-	-	-	-	50
H80 - Graduate Assistants	-	-	-	100	-	100
H90 - Student Workers	-	-	-	822	-	822
	390	2	82	925	7	1,406



Payroll #6, as of 10.15.21

Excludes H20 (Faculty)