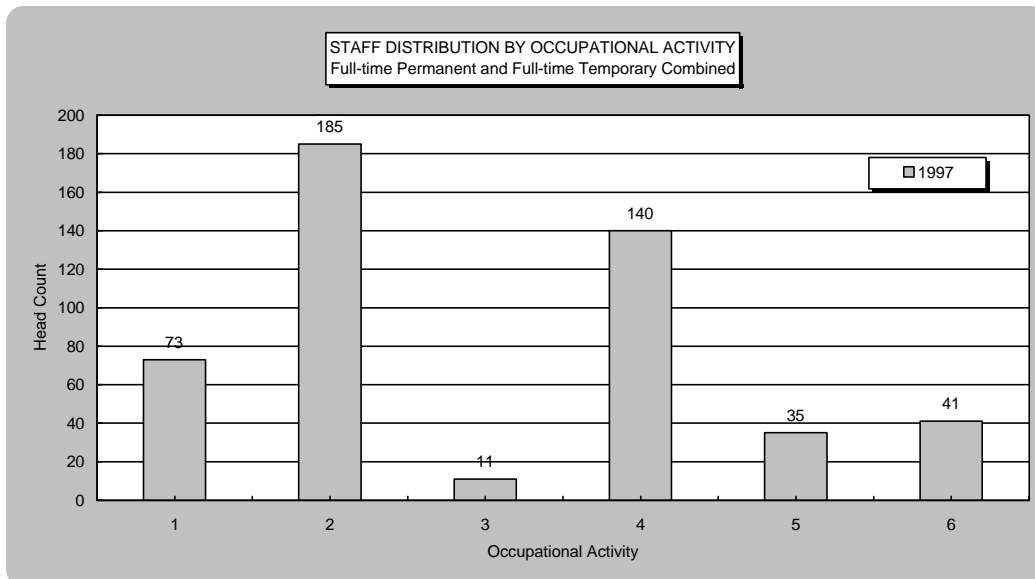


LOYOLA UNIVERSITY NEW ORLEANS

Staff Distribution by Occupational Activity 1997

Primary Occupational Activity*	Full-time Permanent	Part-time Permanent	Full-time Temporary	Part-time Temporary	Total
(1) Executive/Administrative	73				73
(2) Professional/Non Faculty	176	26	9	87	298
(3) Technical and Paraprofessionals	10	1	1	2	14
(4) Clerical and Secretarial	132	8	8	43	191
(5) Skilled Crafts	35	1			36
(6) Service/Maintenance	38	1	3	5	47
(7) Graduate Assistants					0
(8) Student Workers				1295	1295
(9) Other					0
Total	464	37	21	1432	1954



Source: Office of Personnel Services - EEO/Payroll Matrix - Payroll 6.

* For definitions, see following page.